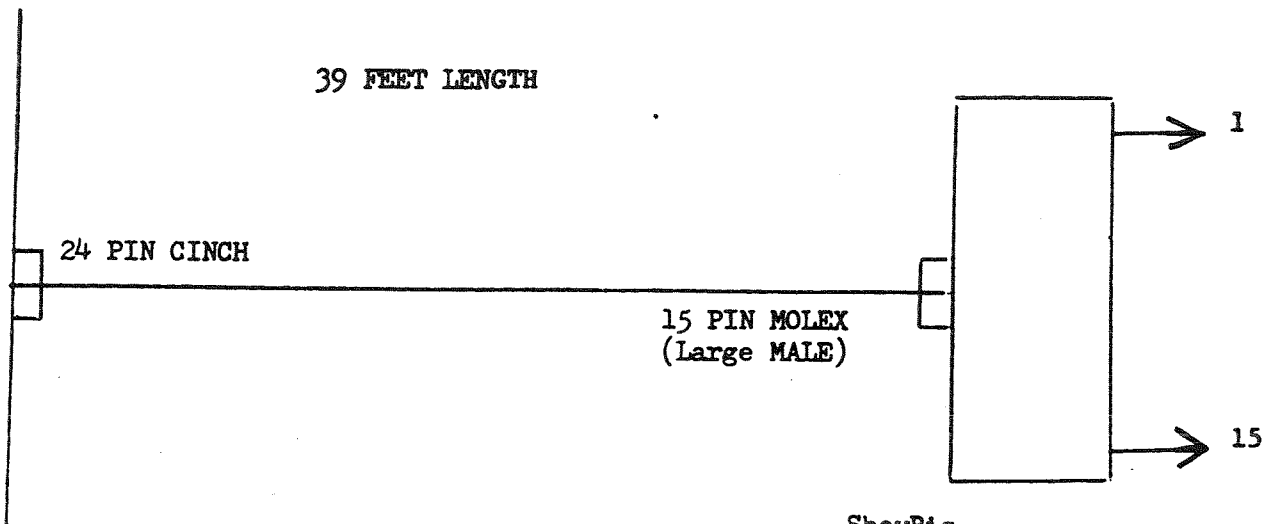


ORGAN	24 PIN HOODED CINCH	15 PIN MOLEX RECEPTACLE Large FEMALE
1.	BROWN	1
2.	RED	2
3.	ORANGE	3
4.	YELLOW	4
5.	GREEN	5
6.	BLUE	6
7.	VIOLET	7
8.	GRAY	8
9.	WHITE	9
10.	BLACK	10
11.	TAN	11
12.	WHITE/RED	12
13.	PINK	13
14.	WHITE/YELLOW	14
23,24	W/B & R/G & R/Y	15

J-10



ShowBiz  
Organ/Sign Cable

15 PIN MOLEX - LARGE FEMALE PIN

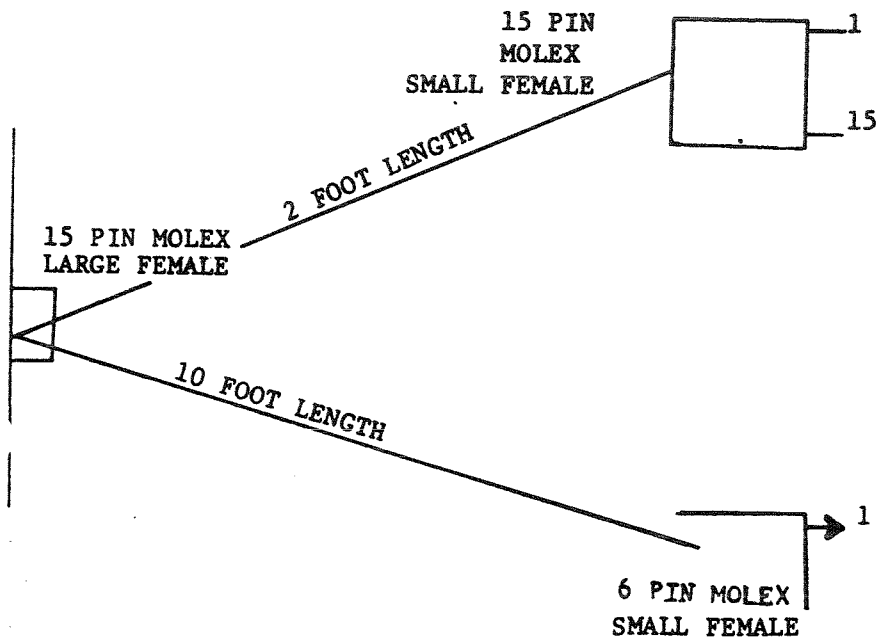
1	BROWN	1
2	RED	2
3	ORANGE	3
4	YELLOW	4
5	GREEN	5
6	BLUE	6
7	VIOLET	7
8	GREY	8
9	WHITE	9
15	BLACK	15

15 PIN MOLEX  
SMALL FEMALE RECEPTACLE

10	BROWN	BROWN	1
	RED	RED	2
12	ORANGE	ORANGE	3
13	YELLOW	YELLOW	4
14	GREEN	GREEN	5

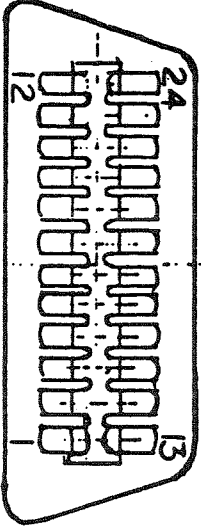
6 PIN MOLEX  
SMALL FEMALE RECEPTACLE

WHITE & BLACK      WHITE & BLACK      6



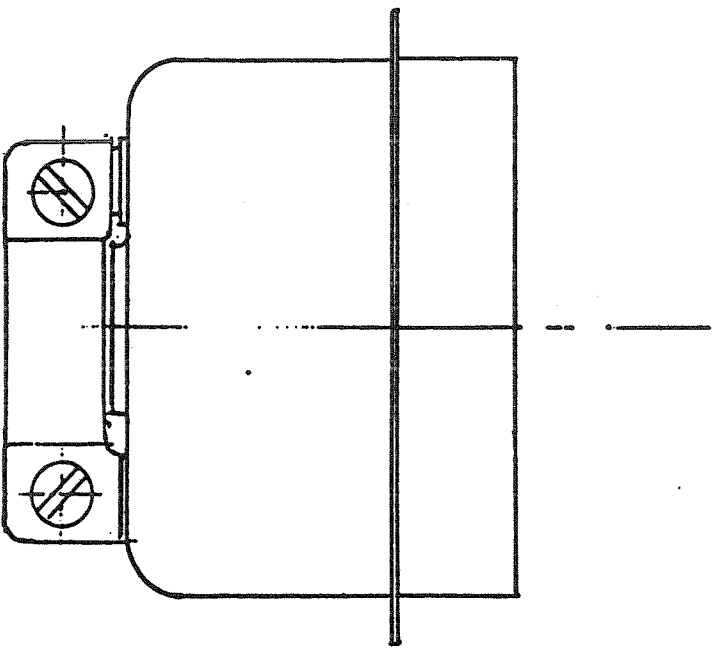
SHOWBIZ  
ORGAN/*Sign* CABLE  
CREATIVE ENGINEERING, INC.  
LMR 11-05-80

NEW COLOR CODE



24 Cond.

- |                   |                               |
|-------------------|-------------------------------|
| 1....Brown        | 13....White/Orange            |
| 2....Red          | 14....White/Yellow            |
| 3....Orange       | 15....White/Green             |
| 4....Yellow       | 16....White/Blue              |
| 5....Green        | 17....White/Violet            |
| 6....Blue         | 18....White/Gray              |
| 7....Violet       | 19....White/Bl/Pink<br>OR RED |
| 8....Gray         | 20....White/Bl                |
| 9....White        | 21....Tan                     |
| 10....Black       | 22....Red/Black               |
| 11....White/Brown | 23....Red/Yellow              |
| 12....White/Red   | 24....Red/Green               |



Alternate

- 25....White/Pink

**AMPHENOL CONNECTOR**

SCALE: 1 X SIZE	APPROVED BY	DRAWN BY
DATE: 4-28-92		CAV R.

DRAWING NUMBER

PRINTED BOARD WIRING

FOR ORGAN

MOLEX PIN #	FUNCTION	12 PIN BARRIER #
1	BLUE	12
2	RED	11
3	AMBER	10
4	GREEN	9
5	LEG - TOP	8
6	LEG - MIDDLE	7
7	LEG - BOTTOM	6
8	CONTINUOUS-STROBE	3
9	FLASH STROBE	2
NONE	STROBE COMMON	1
15	+ 24 VOLTS	

AC - BLACK (L 1) TO PIN 1

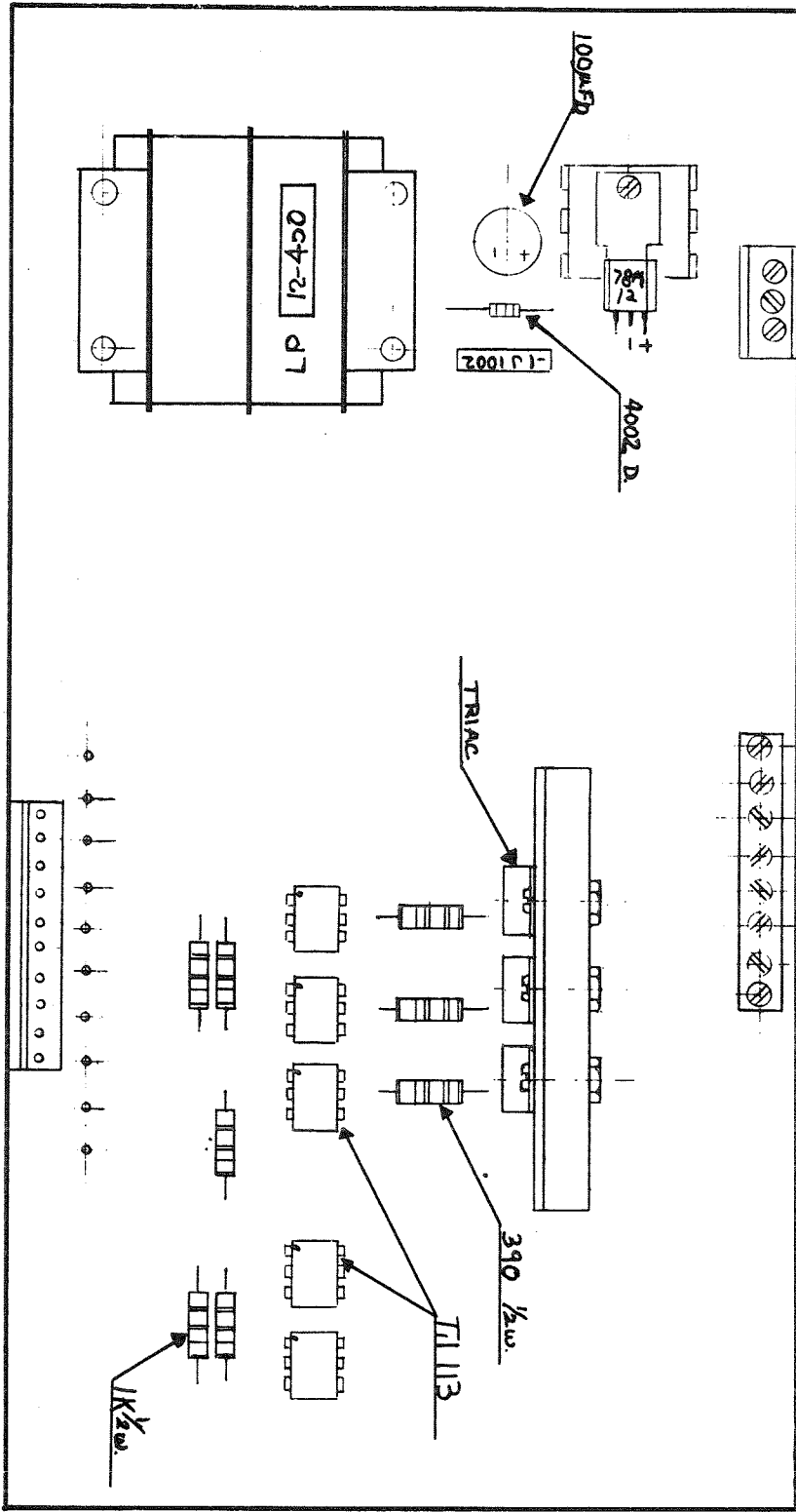
WHITE (L 2) TO PIN 2

MOLEX PIN #	<u>SIGN</u> FUNCTION	8 PIN BARRIER #
1	INNER GROUP	8
2	MIDDLE GROUP	7
3	OUTER GROUP	6
4	CONTINUOUS-STROBE	3
5	FLASH STROBE	2
	STROBE COMMON	1
6	+ 24 VOLTS	

AC - BLACK (L 1) TO PIN 1 OF 3 PINS

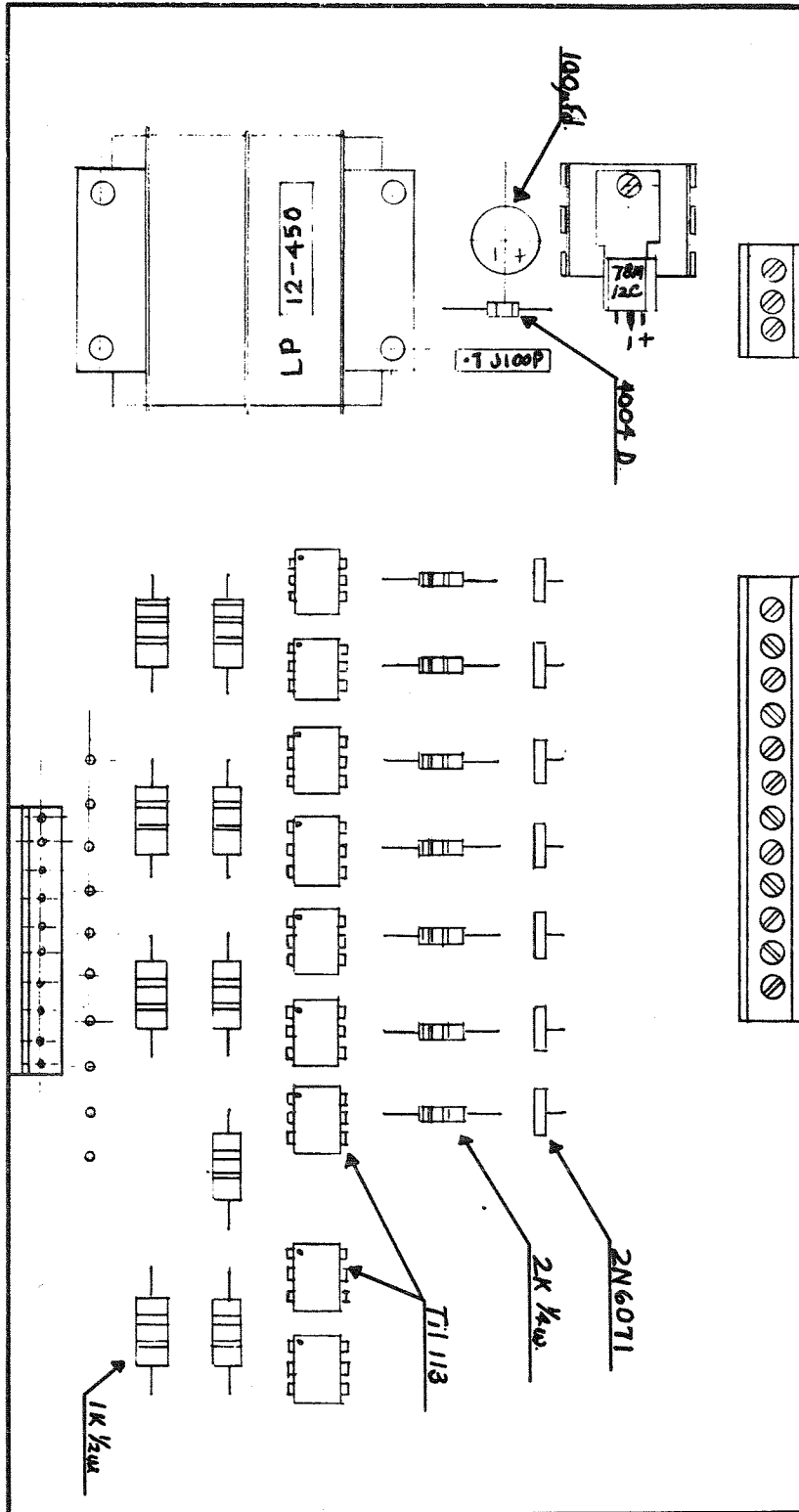
BARRIER, WHITE (L 2) TO PIN 2





Scale: 1 1/2" = 1"  
 A-522-822  
 DRAWN BY CR.

SIGN BOARD



Scale 1 1/2" = 1"  
 Date 4-22-82  
 Drawn by CR

ORGAN DRIVE BOARD

24 PIN HOODED CINCH.

- 1 \_\_\_\_\_ 10
- 2 \_\_\_\_\_ 13
- 3 \_\_\_\_\_ 14
- 4 \_\_\_\_\_ 15
- 5 \_\_\_\_\_ 7
- 6 \_\_\_\_\_ 8
- 7 \_\_\_\_\_ 9
- 8 \_\_\_\_\_ 4
- 9 \_\_\_\_\_ 6
- 23 \_\_\_\_\_ 1
- 10 \_\_\_\_\_ 4
- 11 \_\_\_\_\_ 5
- 12 \_\_\_\_\_ 1
- 13 \_\_\_\_\_ 3
- 14 \_\_\_\_\_ 2
- 24 \_\_\_\_\_ 6

- BLUE
- RED
- AMBER
- GREEN
- TOP
- MID
- BOTTOM
- LEG
- STROBE
- STR COUNT
- STR PLSH
- +24
- INNER
- MID
- OUTER
- PLUG W/MALE PINS
- STR CONT
- STR FLSH
- +24

STOCK	MATL.
-------	-------

All tol. are Non-accumulative		R. + D. APPROVAL DATE		DEBURR AND BREAK ALL SHARP CORNERS ± .010		DRAWN BY	
REVISIONS		PRODUCTION APP. DATE		SCALE:		UNTOLERANCED DIM.	
REV.	DATE	BY	DATE	DATE:	CHKT. BY	FRACCTL.	DECIMAL
						± .020	.XX ± .005
ITEM: ORGAN AND SIGN INTERFACE CABLE				DRAWING NUMBER			
MATL:							

**CRANTREE ENGINEERING**  
 Property of Crantree Engineering, Inc. Reproductions W/O Authorization is strictly prohibited.



